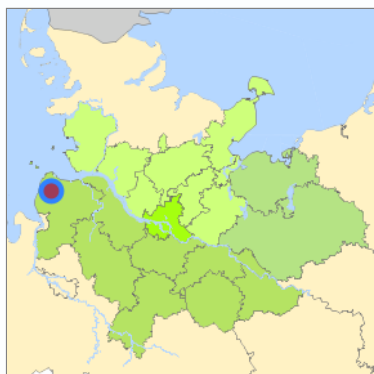
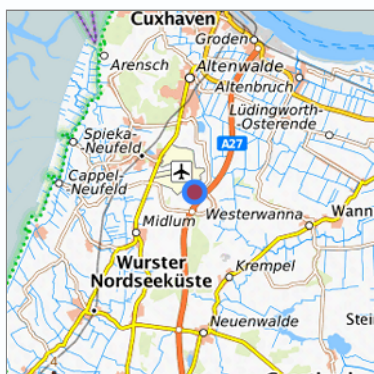


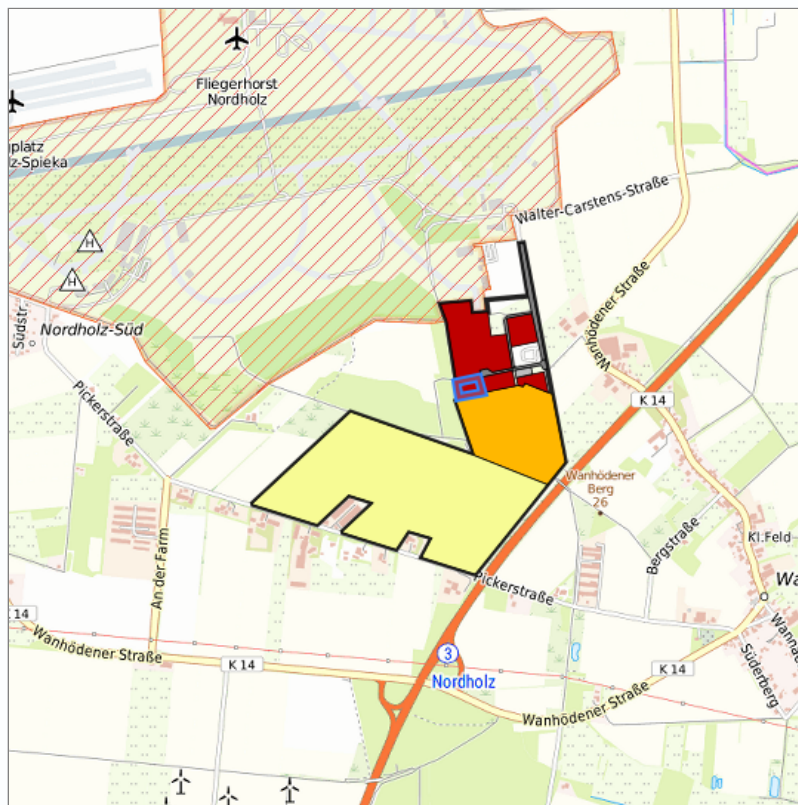
Industriegebiet am Seeflughafen Nordholz/Cuxhaven (006) at Wurster Nordseeküste, Landkreis Cuxhaven



Location in the Hamburg Metropolitan Region



Location in the requested region



Detailed view of the requested site

Legend

Availabilities

 Immediately	 short term (2 years)	 medium term (2-5 years)
 long-term (> 5 years)	 optional area (bindingly reserved)	 occupational pension plan
 not available		

Brief description

Description of the parcel
Municipality/city

Industriegebiet am Seeflughafen Nordholz/Cuxhaven
Wurster Nordseeküste

Parcel

Property size (m ²)	6,605.19
Availability	immediately available
focus use	grassland
further use	unavailable

Legal planning situation

Commercial space secured by planning permission	Yes
Building area according to land use plan	commercial building area
Existing planning law	§30 BauGB (qualified development plan)

Type and extent of building and land use

Specific type of structural use	GI
Development situation	fully accessible
24-hour operation	Yes
possible site occupancy ratio	0.8
possible floor area figure	3
possible number of full floors	3
possible height of building structures	35 - 46
cubic index	10

Exclusions/restrictions of land use

restrictions to mobilization	None
------------------------------	------

Infrastruktur of site

broadband availability (at least 50 MBit/s)	Yes
quay edge	No
quay edge with sea-going vessel deep water	No
direct rail connection	No
electricity connection	Yes
gas connection	Yes
water connection	Yes
wastewater connection	Yes

Proprietary situation and marketing intention

proprietary situation	Public
Owner	Gemeinde Wurster Nordseeküste Westerbüttel 13 27639 Wurster Nordseeküste 04742-87-0 gemeinde@gwnk.de www.wurster-nordseekueste.de

Detailed information about commercial zone

Gross surface area (ha)	99.8939
Sector focus	trade, maintenance and repair of motor vehicles , information and communication economy , other services , manufacture of computer, electronic and optical products , machinery and vehicle construction , coking plant and mineral oil processing , textile and clothing industry , catering and hotel sector , business-related services , construction industry , metal production and processing , other manufacturing sectors , household-related services , logistics industry and storage , public administration , chemical and pharmaceutical industry , Not known , utilities sector and waste management business , food industry , mixed sector structure , not specified , retail , research and development , wholesale
Type of location of commercial estate	special sites , classic commercial estate , Others , location for knowledge-oriented industry and services , location for emission-intensive industry

Transport accessibility

Motorway	A 27	5.2 km
Motorway	A 26	71.1 km
Motorway	A 23	71.2 km
Motorway	A 270	72.6 km
Motorway	A 281	76.7 km
Motorway	A 1	87.5 km
Main road	B 73	9.6 km
International airport	Flughafen Bremen	89.4 km
International airport	Flughafen Hamburg	115.0 km
Regional airport	Cuxhaven	0.2 km
Commercial airfield	St. Michaelisdonn	56.6 km
Commercial airfield	Hungriger Wolf	82.3 km
Commercial airfield	Heide-Büsum	84.1 km
Commercial airfield	Uetersen/Heist	97.5 km
Commercial airfield	Rotenburg (Wümme)	99.9 km
Port	Seehafen Stadt Cuxhaven	14.9 km
Port	Seehafen Brunsbüttel	50.4 km
Port	Seehafen Glückstadt	64.1 km
Port	Seehafen Stade-Bützfleth	70.0 km
Port	Binnenhafen Itzehoe	73.9 km
Intermodal terminal	Terminal Cuxhaven (trimodal)	15.7 km
Intermodal terminal	Terminal Brunsbüttel (trimodal)	49.1 km
Intermodal terminal	Industriebahnhof Stade-Brunshausen	71.7 km
Rail passenger transport	Nordholz	10.0 km
Rail passenger transport	Cuxhaven	14.1 km
Rail passenger transport	Dorum	16.0 km
Rail passenger transport	Ottendorf	20.5 km
Rail passenger transport	Wremen	22.3 km
Availability of public transport	Limited available	

Links to the commercial zone

<https://www.sea-airport.de/index.php?id=30>

<https://www.komsis.de/de/gewerbeflaechen/?profile=GF-39495>

Information about Wurster Nordseeküste

GDP per capita (in €) (district level)	24,562.00
Rate of unemployment (in %) (district level)	5.10
Inhabitants of the municipality	17,421
Trade tax rate	390
Property tax B	286

Links to the location

<https://wurster-nordseekueste.de/>

Contact

Christoph Nagelfeld
Gemeinde Wurster Nordseeküste
Fachbereichsleitung Finanzen
Westerbüttel 13
27639 Wurster Nordseeküste
[04742 87-200](tel:0474287200)
c.nagelfeld@gwnk.de
<http://www.wurster-nordseekueste.de>

Phil Path
Gemeinde Wurster Nordseeküste
[0474287205](tel:0474287205)
p.path@gwnk.de

Manuela Reddig
Gemeinde Wurster Nordseeküste
[0474287204](tel:0474287204)
M.Reddig@gwnk.de